

Riders trust Vettec.



William Fox-Pitt
Eventing



Sigurður Marinusson
Icelandic Horse Rider



Andrew James
Showjumper



Belinda Hitzler
Endurance Rider

NEW

Equi-Pak CS

Soft Instant Pad Material for Thrush (Green).
Great in combination with Sole-Guard.

- Infused with copper sulfate to effectively treat most cases of thrush
- Can be used as a preventative measure during wet seasons
- Eliminates the need to pick out the feet and apply daily medication
- Sets in less than 1 minute
- Adheres to the sole



Dispense Equi-Pak CS



Dispense Sole-Guard



20ml. Equi-Pak CS

Your Vettec dealer:



Vettec, Inc
Zonnebaan 14 | 3542 EC Utrecht | Netherlands
Tel. +31 (0)30 241 1823 | Fax +31 (0)30 241 0054
E-mail: info@vettec.net

www.vettec.com

No Shoes? No Problem.

Sole-Guard Provides Comfort & Support to the Unshod Foot.



NEW



The professionals
choice

70153



www.vettec.com



INTRODUCING

Sole-Guard™

Complete protection for the unshod foot.

Sole-Guard™ is the first product of its kind to offer fast and effective **protection and support for the unshod foot.**

Simply fill the bottom of the foot with Sole-Guard creating a protective coating that bonds to the foot for three weeks*.

Sole-Guard sets firm to protect the unshod foot, but retains flexibility to move naturally with the foot, providing comfort and support. Contact your dealer or Vettec today to see how Sole-Guard can work for you.

** Note: Weather and local conditions may cause slight variation.*

Learn more at Vettec.com



Contouring Plastic is used after applying Sole-Guard to smooth and level the material. Contouring Plastic will not stick to Sole-Guard and can be discarded after use.

Sole-Guard application

- Areas of wetness or bleeding should not be covered.
- Vettec products are best used between 18° - 29°C.
- Do not burn or "Hot Shoe" this product.
- Use only vettec mixing tips.

CARTRIDGE PREPARATION

To open the cartridge, remove the tip at line with nippers. Insert cartridge into dispensing gun.

Before attaching the mixing tip, equalize the cartridge by squeezing out a small amount to ensure that both sides are dispensing evenly.

Attach mixing tip by pressing and twisting clockwise.

When finished, don't release the pressure with the lever on the back of the dispenser. Remove the mixing tip immediately, discard, and replace with a cap. Push the pressure release lever. Caps are available from your dealer. For additional applications, re-equalize the cartridge, and attach a new tip.

HOOF PREPARATION

Trim and conservatively pare the sole.

ALWAYS DRY HOOF THOROUGHLY using a heat gun or hair dryer. Don't overheat

PROCEDURE 1 - WHEN WORKING ON LEVEL SURFACES

Immediately after drying, hold hoof as flat and level as possible.

With the frog turned upward, apply Sole-Guard and fill in the sole until the desired level is achieved.

This is usually to just short of the white line. Do not fill above the level of the wall.

Place contouring plastic sheet over sole and level the Sole-Guard material.

Hold the hoof for approximately 1 minute, then release.

Remove contouring plastic sheet in approximately 5-6 minutes.

PROCEDURE 2 - WHEN WORKING ON SOFT/UNEVEN SURFACES

After drying; hold hoof and dispense Sole-Guard allowing material to flow towards toe.

Apply Vettec's foam board(REF 46015) to toe region first and lay board towards heel leveling the Sole-Guard material.

Hold for one minute and set foot down.

Remove foam board after 5-6 minutes.

EMERGENCY/TRAIL RIDING PROCEDURES

Wire-brush the sole and frog removing all dirt and debris.

Dry the sole and frog using clean rag or towel.

Apply as above using either method 1 or 2.

Limited Remedy: Follow instructions carefully. If your application is not covered by these instructions, call +31-(0)30-2411 823 before using this product. Buyer agrees that if Vettec products are proved defective, the user's exclusive remedy will be, at manufacturer's election, to replace the defective vettec product or to refund the purchase price for the defective quantity. Manufacturer is not liable for direct, indirect, incidental or consequential damages regardless of legal theory asserted, including assertion of negligence and strict liability.

Vettec's Latest Innovation!

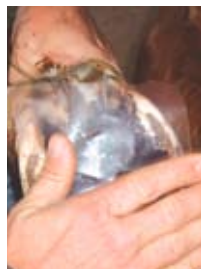
Protect & support an unshod foot in minutes.



Unshod foot



Dispense SoleGuard onto a clean, dry sole



Use Vettec's contouring plastic to flatten and smooth material



Sole-Guard sets in 30 sec. and is weight bearing after 1 min.



Complete foot protection and support